



ambler  
**FARM**



# Friends of Ambler Farm

Board of Selectmen Meeting  
March 18, 2025



ambler  
FARM

WHERE GOOD THINGS GROW

# Cultivating a Sustainable Future



## DID YOU KNOW AMBLER FARM...

Is operated by Friends of Ambler Farm, a 501(c)3 nonprofit organization and owned by the Town of Wilton

Is **free and open to the public** 365 days a year, from dawn to dusk.

Welcomes **25,000+** visitors each year.

100% of the proceeds from our programs, events, memberships, donations, and activities support the Farm.

Offers **Educational programming** for children and adults of all ages.

Cares for **Production and Educational gardens** which follow sustainable and organic farming practices.

Hosts weekly **Transplant Sales, Saturday Farm Stands,** and **Wilton Farmers' Market** during the growing season.

Draws hundreds of visitors to enjoy the sunflower field in bloom.



ambler  
FARM

WHERE GOOD THINGS GROW

# Cultivating a Sustainable Future



Offers fun and exciting **Special Events** for fundraising to support the day to day operations.

Welcomes over **1,100 Summer Campers** annually.

**Cares for our animals** including: sheep, goats, rabbits, chickens, ducks, geese and turkeys.

Day-to-day operations are managed by an Executive Director and **four full-time and seven part-time staff.**

**Donated over 15,400 lbs of produce** to area food pantries and shelters.

**Donated 200+ Christmas Trees** to Wilton Social Services families.

**Provided \$40,000+ of Nutrition Checks** to Wilton and Weston Social Services for families to purchase produce at Ambler Farm's farm stand.

Depends on over **200 volunteers.**

**We need your help.**  
Will you join us in supporting Ambler Farm?



# FULL SEASON FARM YEAR-ROUND ACTIVITIES A COMMUNITY RESOURCE FOR ALL

## Programs + Events

### WINTER:

Martin Luther King Jr.  
Day of Service

Tap-a-Tree

Maple Sugaring Program:  
~ Tap-a-Tree  
~ Middle and High  
School Sugaring  
~ School Field Trips

Winter Sprout + Me

Winter Junior  
Apprentice

Valentine's Tea

Home Garden  
Workshop

Ladies Night Out:  
Pysanky Egg Decorating

### SPRING:

Apprentice Program

Beekeeping

Buddy Program

Builder's Program

Spring Sprout + Me

Spring Junior Apprentice  
Program

Spring Field Trips

Transplant Sale

Fun Run

Farm Stand +  
Farmers' Market

Taste on the Farm

Summer Camp

Red Barn Live

### SUMMER:

Summer Camp

Apprentice Program

Buddy Program

Builders Program

Farm Stand +  
Farmers' Market

Red Barn Live

Garden Tour + Tomato  
Tasting

### FALL:

Apprentice Program

Buddy Program

Builder's Program

Fall Sprout + Me

Fall Junior Apprentice  
Program

Fall Field Trips

Trebuchet Team

Ambler Farm Day

Fright Night

The Great Pumpkin Drop

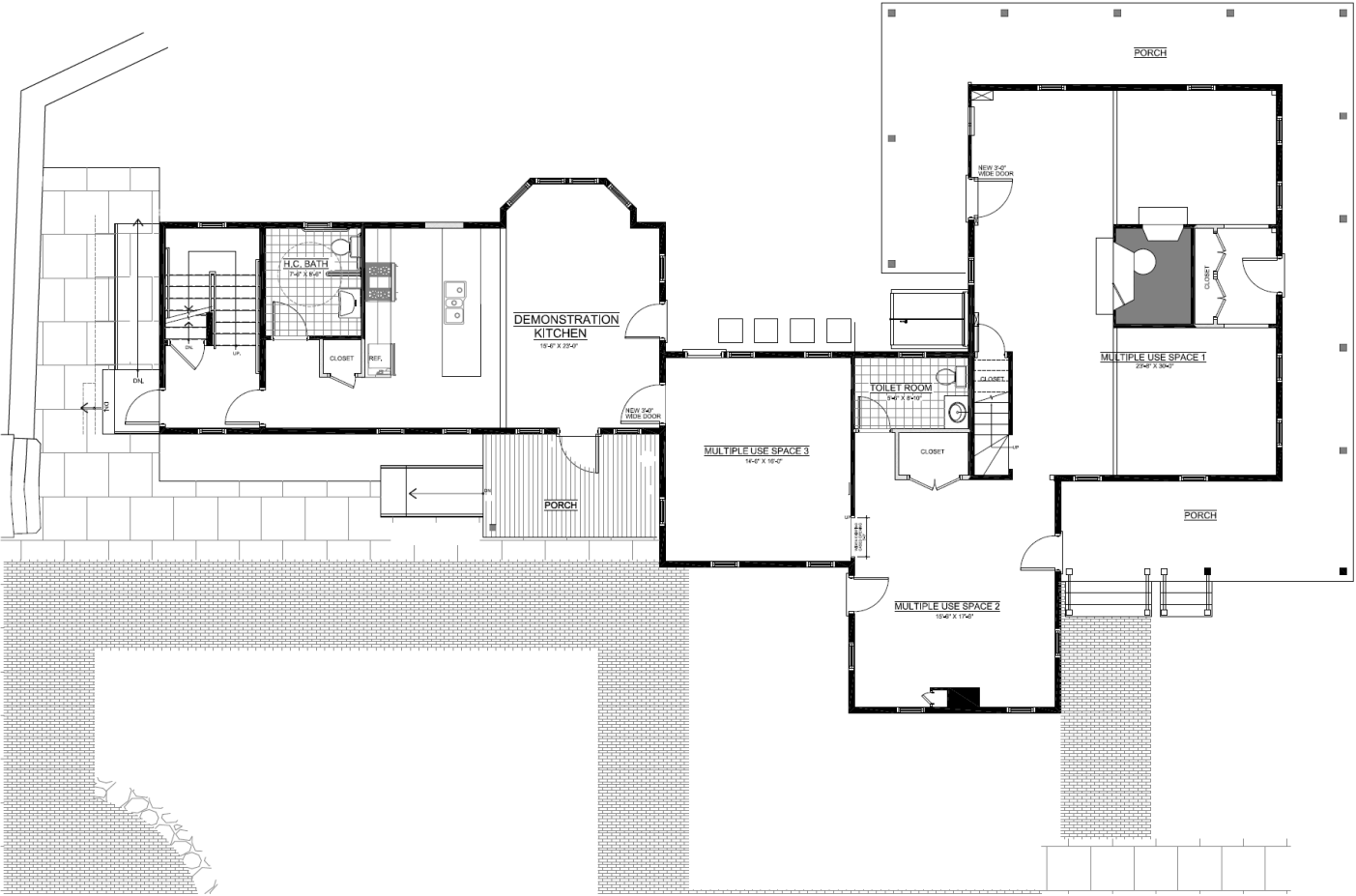
Thanksgiving  
Trebuchet Launch

Greens Sale

# 2025 Ambler Farm Bonding Consideration March 18, 2025



# Raymond Ambler House First Floor Schematic



Richard Vail,  
Architect  
4 Mooney Hill Road  
Hartford, CT 06111  
(845) 531-8339

**Ambler Farm**  
**Raymond Ambler House**  
257 Hurfbutt Street, Wilton, Ct.

Proposed  
1st Floor  
Plan

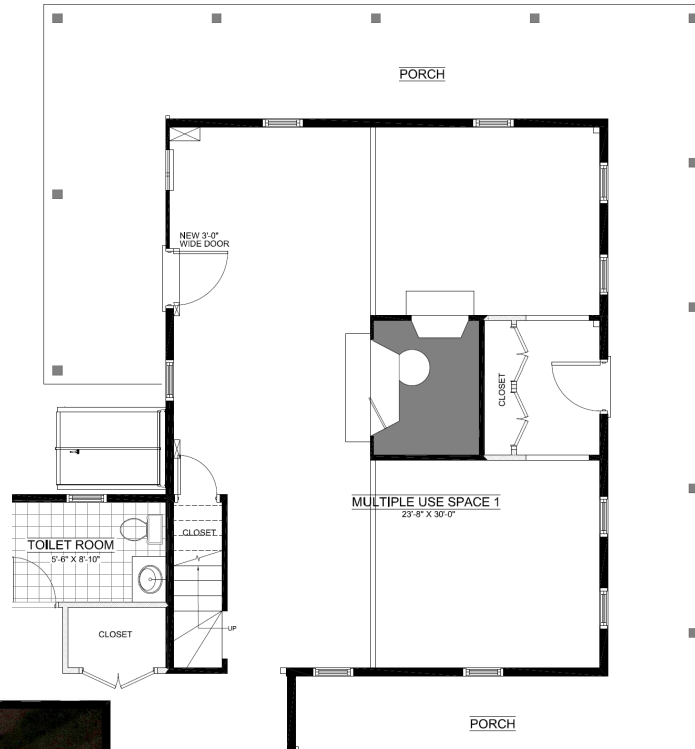
8-2-24

Sheet  
A 1

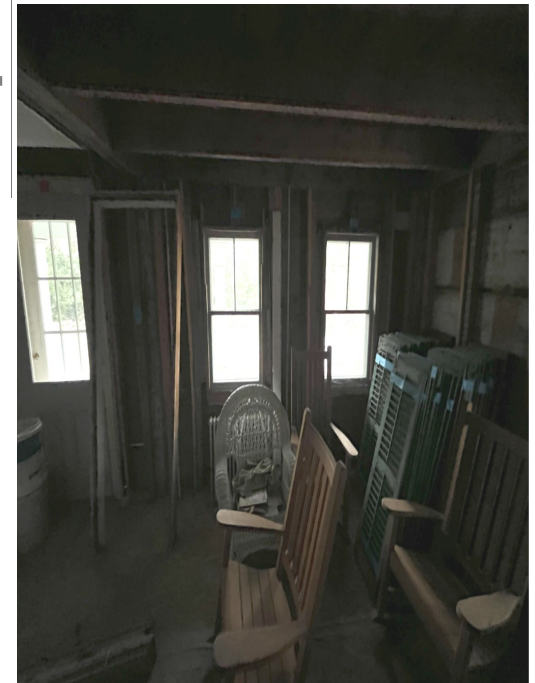
Proposed First Floor Plan

1/4" = 1'-0"

## Raymond Ambler House Front Section – Hearth Room



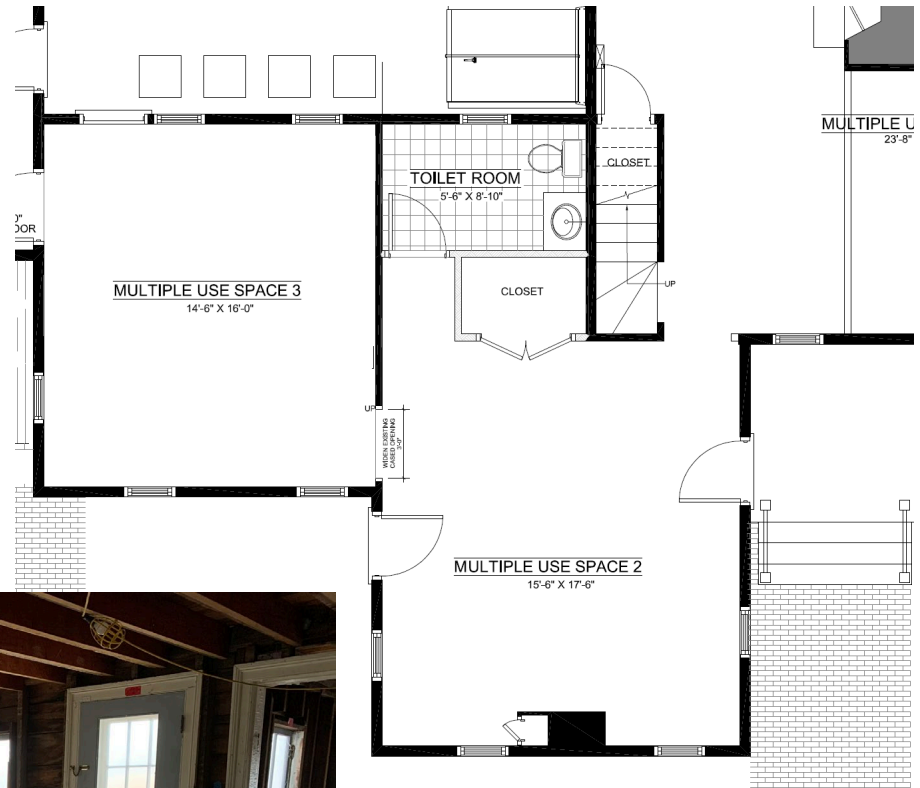
Fully restore hearth.  
Open walls between  
small rooms surrounding  
it to allow maximum  
occupancy for  
educational  
programming and  
events.



# Raymond Ambler House Center Section – Multi Use Rooms



**Multi Use Space 3**

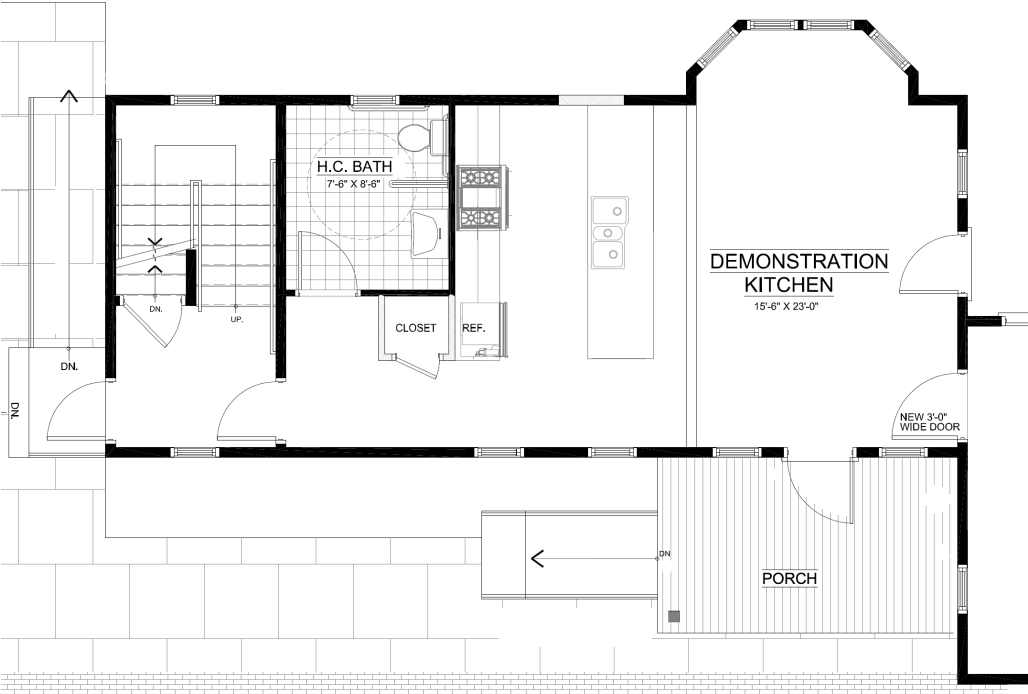


**Multi Use Space 2**

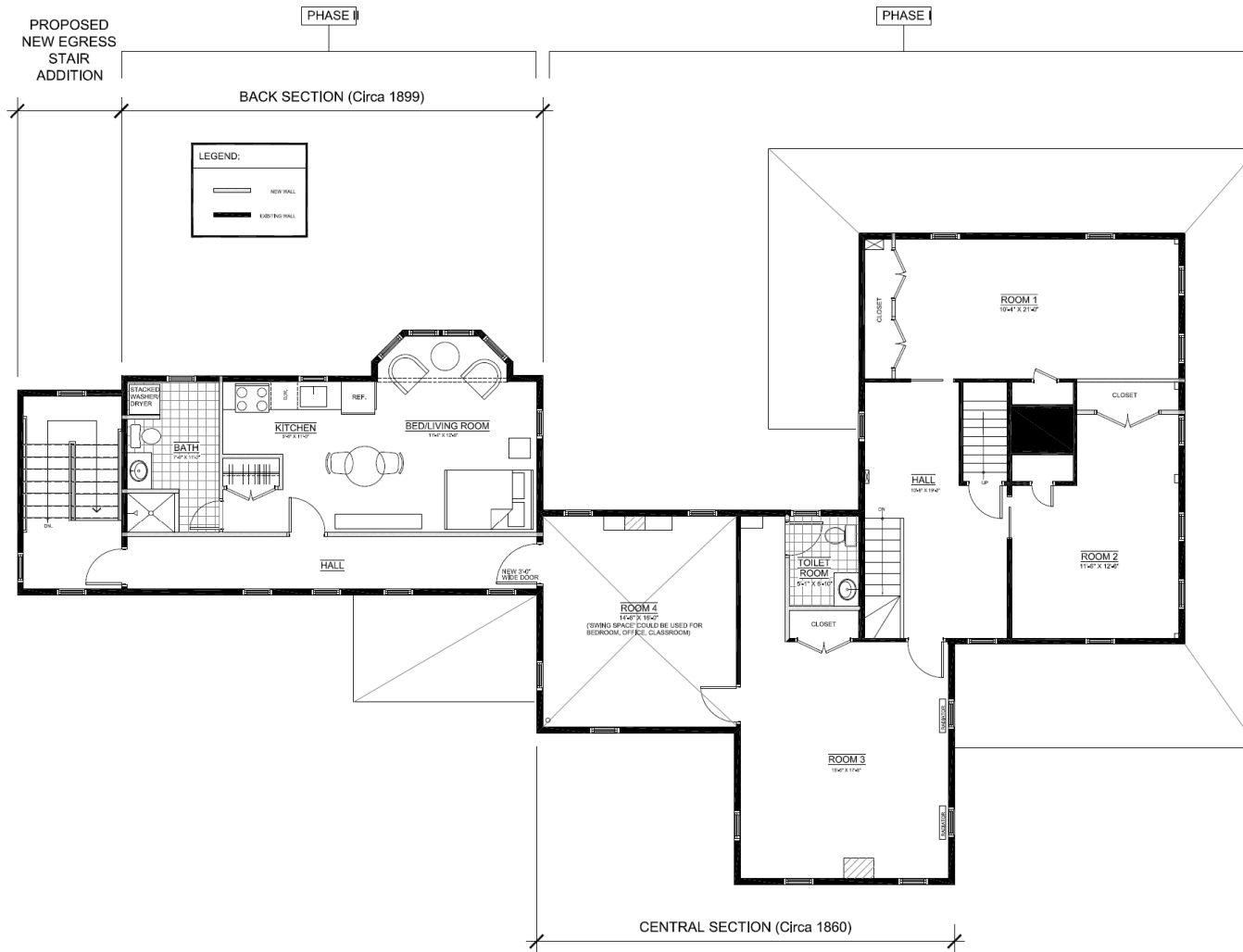
# Raymond Ambler House Back Section – Kitchen / HC Bath / Stairwell



Most flexible and highly usable space. Kitchen will allow for hands on farm to table programs and event space



# Raymond Ambler House Second Floor Schematic



Richard Vail,  
Architect  
4 Monney Hill Road  
Huntington, N.Y.  
12531  
(845) 531-9339

Ambler Farm  
Raymond Ambler House  
257 Hurlbutt Street, Wilton, Ct.

Proposed  
2nd Floor  
Plan

9-2-24

Sheet  
A 2

Proposed Second Floor Plan

1/8" = 1'-0"

# Raymond Ambler House 2<sup>nd</sup> Floor Front Section Schematic



Administrative  
office space

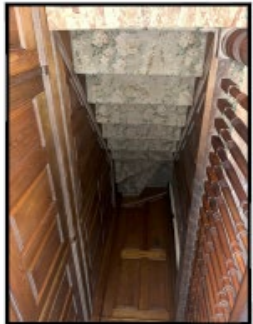
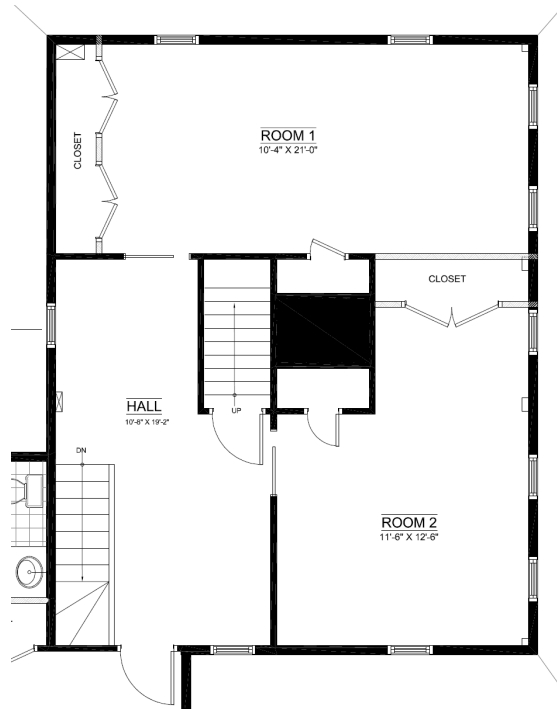
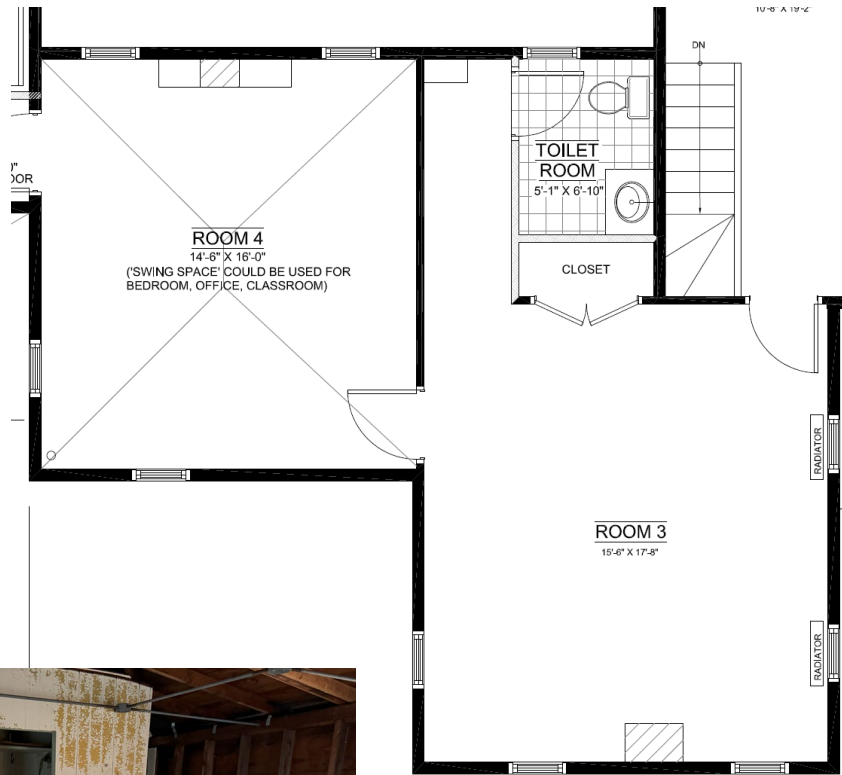


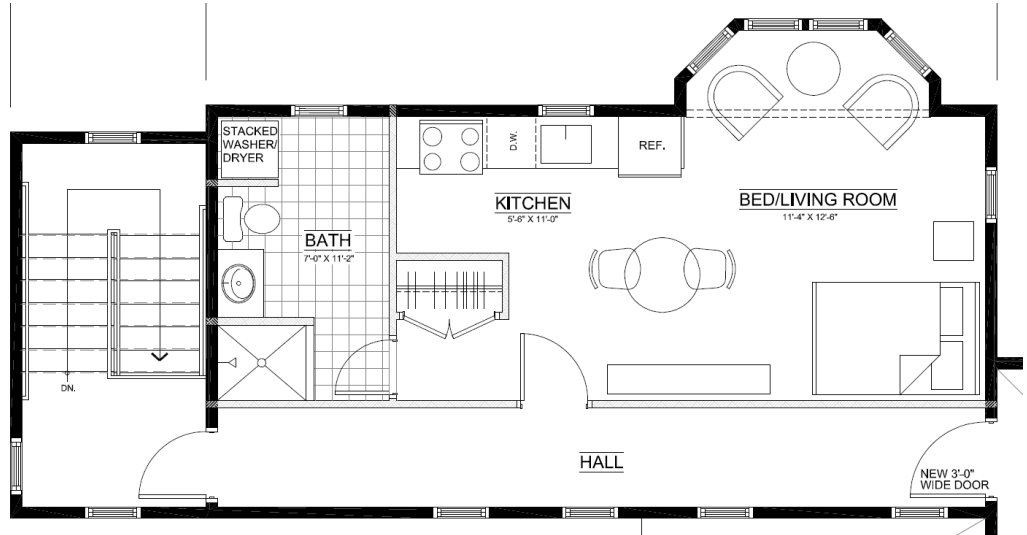
PHOTO 18

# Raymond Ambler House 2<sup>nd</sup> Fl Center Section Schematic



# Raymond Ambler House 2<sup>nd</sup> Fl Back Section Schematic

Back  
stairwell +  
small  
caretaker  
or seasonal  
farm hand  
apartment



**In 2024, the Friends of Ambler Farm repainted the exteriors of both the Red and White Carriage Barns. New gutters were also installed onto the White Carriage Barn. The White Carriage Barn remains the only heated and cooled building to use for activities and administrative workspace.**

**Friends of Ambler Farm also replaced the roofs on both of these buildings.**

**This work was made possible by a generous CT State Grant and no Town funding or taxpayer money was used to fund this work.**



**As of 2025, The Raymond Ambler House and the Yellow House are the two remaining buildings to be finished.**

