

Wilton Board of Education 2025-2026 Proposed Budget

May 6, 2025



**Wilton Board of Education
Ruth DeLuca, Nicola Davies, Lori Bufano, Pam Ely, Heather Priest, Patrick Pearson
Superintendent: Kevin Smith**

OUR MISSION AND VISION

Our Mission

Wilton Public Schools inspire and prepare all students to contribute meaningfully to a globally interdependent society.

Our Vision

Guided by expert instruction and a rigorous, learner-centered curriculum, our students actively pursue their goals and aspirations and grow to be productive and resourceful members of the community.

Our Values

- Safety and wellness of our students
- Bringing joy to teaching and learning
- Strengthening community
- Stewarding the environment
- Personalizing instruction to meet the needs of each learner
- Cultivating productive partnerships with students and families
- Our learning experiences are challenging, authentic, relevant and meaningful



VISION OF A LEARNER

Wilton Public Schools' Portrait of the Graduate represents our vision for the 21st century skills, traits and attributes that our students need to succeed in college, career and life.

EDUCATION EXCELLENCE RANKINGS and RESULTS



HARVARD
UNIVERSITY



Tufts
UNIVERSITY

EMORY



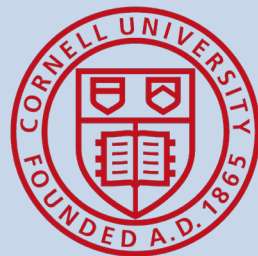
DARTMOUTH
BIG GREEN

BOSTON
UNIVERSITY

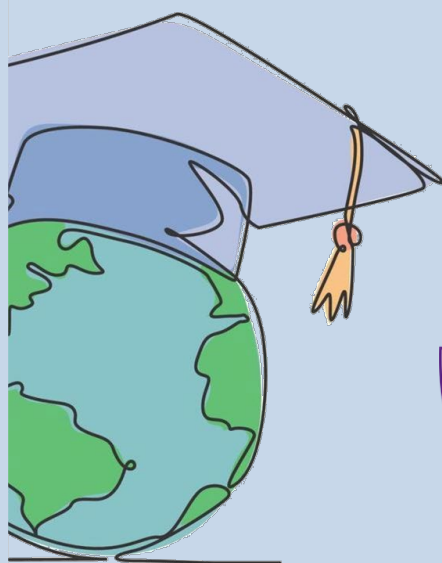
The
George Washington
University
WASHINGTON DC



PRINCETON
UNIVERSITY



COLLEGE OF THE
Holy Cross



WILTON HIGH SCHOOL IS
RANKED IN THE TOP 1% OF
HIGH SCHOOLS IN THE USA



WILTON HIGH SCHOOL
2024 AP HONOR ROLL



RANKINGS & RESULTS



WILTON PUBLIC SCHOOLS
#3 OF 120 SCHOOL
DISTRICTS IN CT

WILTON RECOGNIZED
AMONG APPROXIMATELY
100 DISTRICTS NATIONWIDE
THAT ARE
PERFORMING ABOVE PRE-
PANDEMIC LEVELS

FOR THE SECOND TIME,
CIDER MILL WAS
DESIGNATED A "SCHOOL OF
DISTINCTION" AND HAD THE
3RD HIGHEST
ACCOUNTABILITY INDEX
SCORE AMONG GRADE 3-5
SCHOOLS IN THE STATE.



WILTON PUBLIC SCHOOLS
RECORDED THE SECOND
HIGHEST ACCOUNTABILITY
INDEX SCORE IN
CONNECTICUT

WHS AND MB EACH HAD
THE HIGHEST INDEX
SCORES FOR
COMPREHENSIVE HIGH
SCHOOLS AND MIDDLE
SCHOOLS RESPECTIVELY.

CT SCHOOL DAY SAT
EBRW #1 IN CT & 2ND
HIGHEST AVERAGE SCORE
IN CT
MATH: #3 IN CT & 2ND
HIGHEST AVERAGE SCORE
IN CT



MIDDLEBROOK RANKED
#4 IN CONNECTICUT
MIDDLE SCHOOLS



NGSS:
GRADE 11: #1 IN CT
GRADE 8: #2 IN CT

153 CURRENT STUDENTS
HAVE EARNED THE SEAL OF
BILITERACY

FALL 2025
26 ALL FCIAC ATHLETES
6 ALL-STATE ATHLETES

CLASS OF 2024:

- 9 DIVISION I
ATHLETES
- 2 DIVISION II
ATHLETE
- 27 DIVISION III
ATHLETES

338 STUDENTS CURRENTLY
ENROLLED IN 1 OR MORE
ECE COURSE

NAMM FOUNDATION
BEST COMMUNITY FOR
MUSIC EDUCATION
2021, 2022, 2023 AND
2024

96.8% OF STUDENTS
SCORED A 3 OR BETTER

4.27
AVERAGE AP SCORE

- 330 AP STUDENTS
- 320 STUDENTS TESTED
- 737 EXAMS TAKEN



2025
5 SEMI FINALISTS
19 COMMENDED STUDENTS

FCIAC SPORTSMANSHIP
AWARD
WHS ATHLETIC
DEPARTMENT
GIRLS BASKETBALL TEAM
BASEBALL TEAM
FCIAC PLAYER OF THE
YEAR

✓ Goals

Support the Board of Education's primary goals:

- Raise student achievement, narrow the achievement gap, and strengthen community, wellness and belonging.
- Address In-district Special Education Transportation
- Support Facilities Improvement Plan

✓ Assumptions

- Compliance with federal and state legal mandates
- Honoring collective bargaining agreements
- Teacher projected salaries will increase on average 4%
- Administrator salaries will increase by 3.15%
- Custodial salaries will increase by 2.6%
- Utilities will increase by an average of 3.5%
- Medical insurance costs will increase by about 6%
- Transportation costs may increase by 5-6%
- And the district will incur additional professional development, text book and digital resource expenses with reading and ELA curriculum shifts

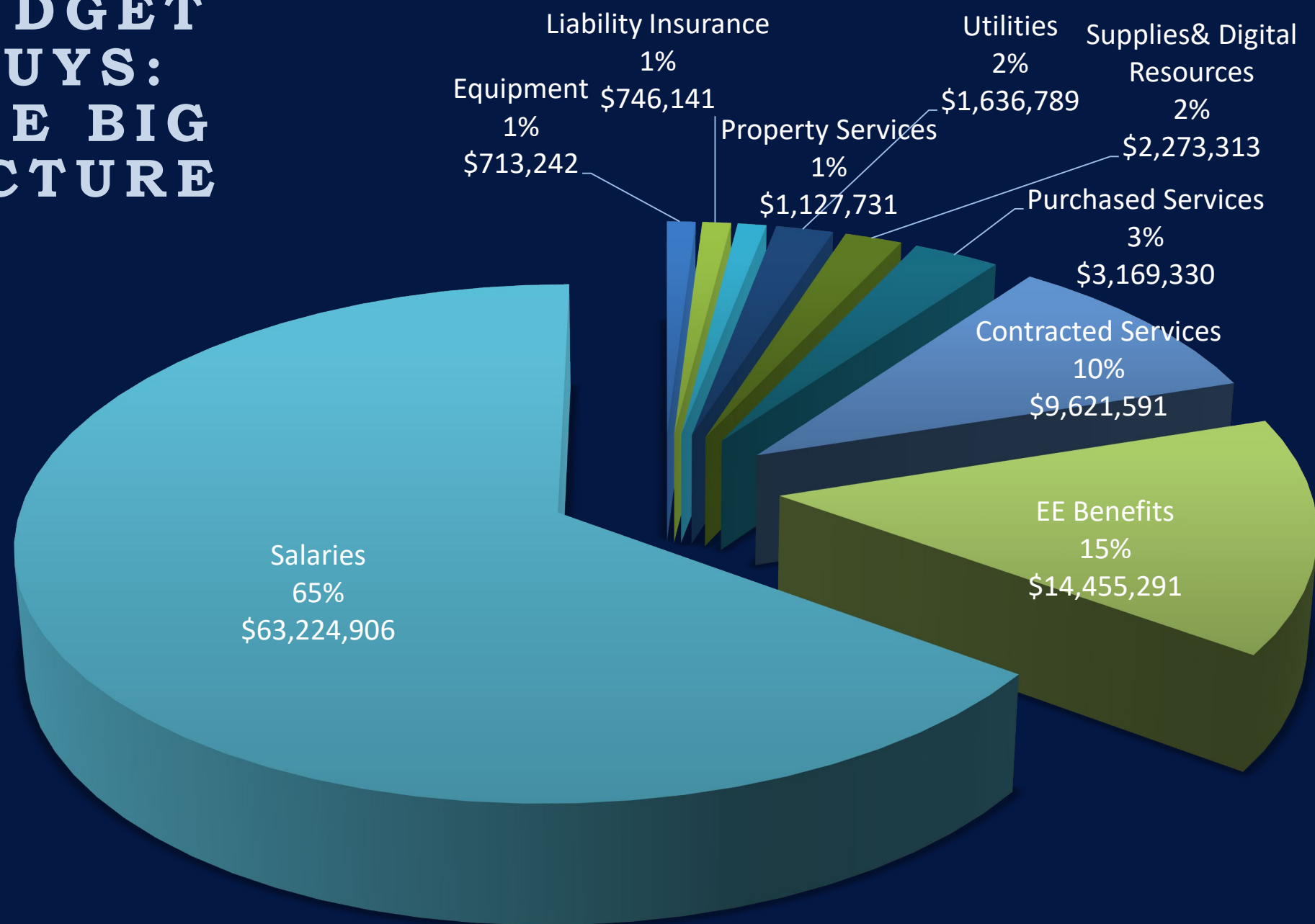
✓ Priorities

- Maintain current class sizes.
- Maintain current mental health FTE and support the continued development of SEL Strengthen instructional task design practices.
- Support the continued development and implementation of Wilton's Vision of a Learner.
- Fund STEM initiatives
- Maintain commitment to professional learning and curriculum development.

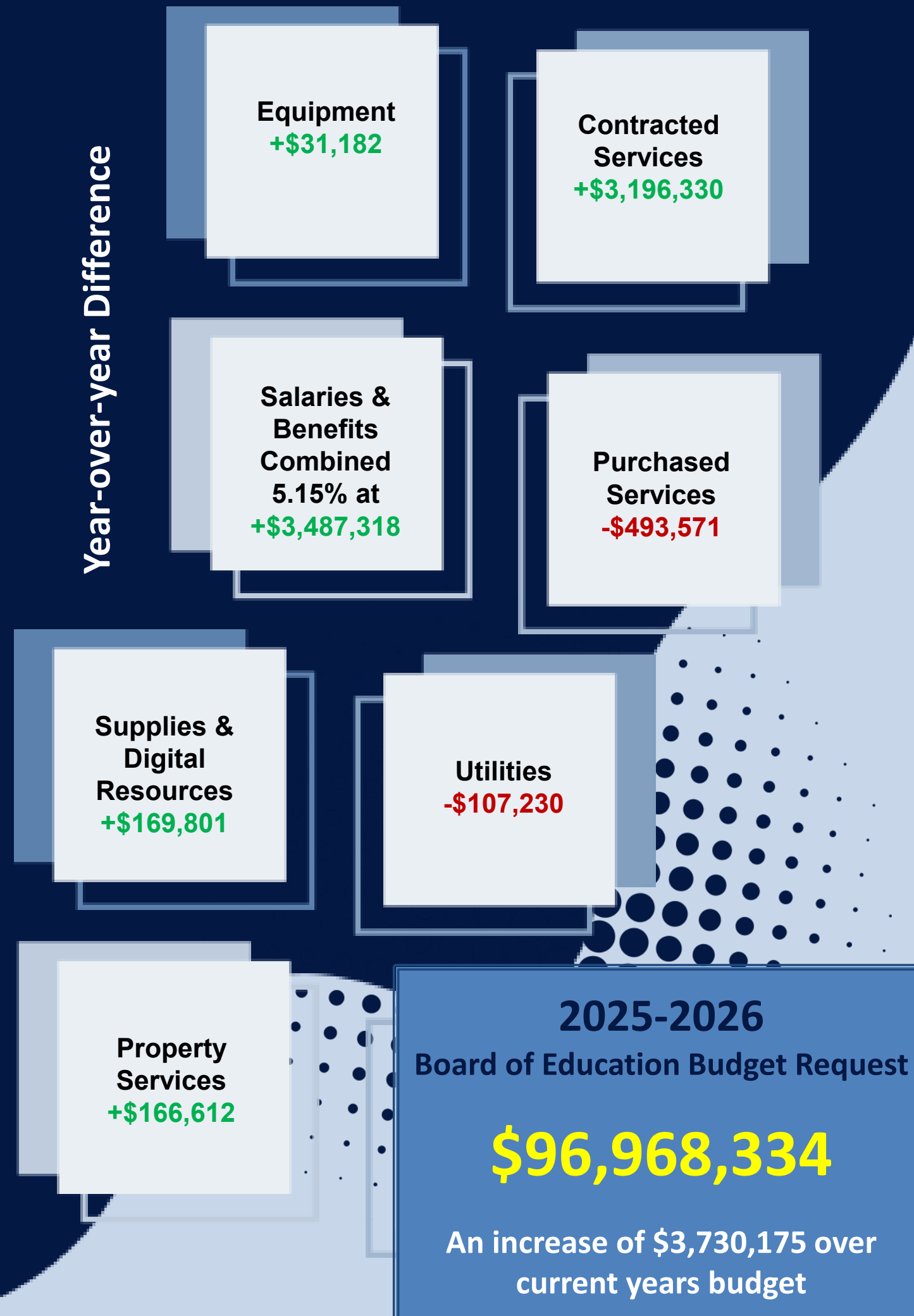


Student Enrollment:
Total enrollment is projected to be 3796 which represents an anticipated increase of 13 students

WHAT THIS BUDGET BUYS: THE BIG PICTURE



Year-over-year Difference



- 80% of the budget, about \$74.5 million, accounts for the total cost of staff with benefits - this alone represents a 5.15% increase over last year
- 74% of teachers will be at the highest salary step and lane.
- Salary increases by bargaining unit:
 - Teachers = avg. of 4%
 - Administrator = 3.15%
 - Custodial = 2.75%
 - Secretaries/Para = 2.6%

2025-2026
Board of Education Budget Request

\$96,968,334

An increase of \$3,730,175 over current years budget

PRIORITIES and CHOICES

FY 26 Budget

- 3.0 FTE Teachers & 1.0 FTE paraprofessional based on enrollment increases at Miller-Driscoll & Cider Mill
- Restoring the Director of Digital Learning position to full-time
- Increasing the stipend of the WHS SAT coordinator
- Partial salary coverage, WHS social worker due ARPA grant expiring

Approx: \$365,000

Requests Reduced

- SPED Contract Services
- Furniture
- Training and Conferences
- Library Books
- Digital Resources
- Paraprofessionals
- General Supplies
- Security measures covered by a grant

Approx: \$315,000

FY 25 Carryover

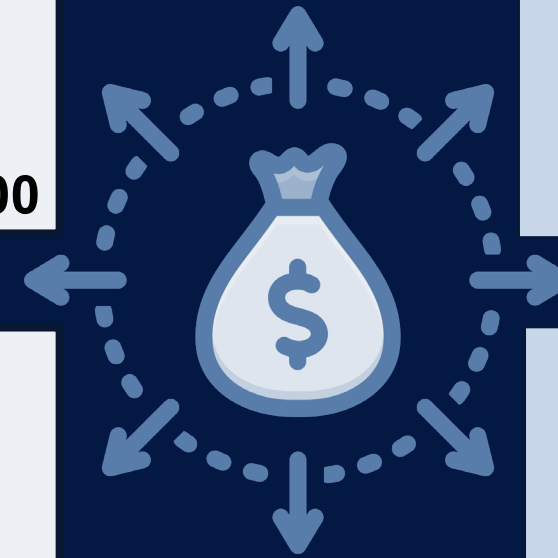
- Six staffing changes including:
 - Partial salary coverage for Cider Mill Reading interventionist and SRBI coordinator previously covered under Title I grant.
- Moving the Safe School Climate Coordinator to Administrative level
- Special Education paraprofessional
- Assistant Athletic Director Stipend
- SEL Team Leader Stipend

Approx: \$230,000

Requests Deferred

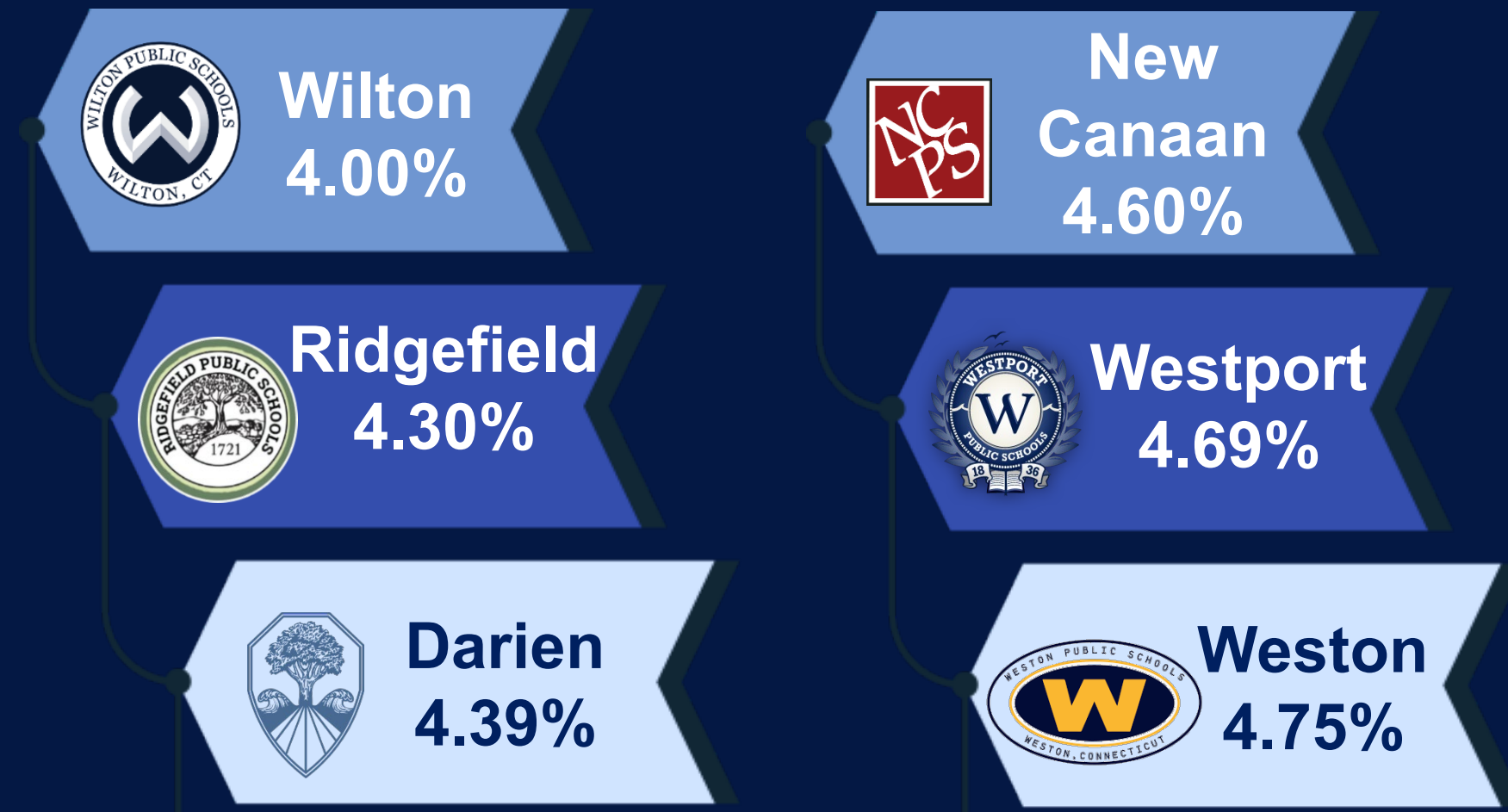
- .10 FTE CM Strings
- .20 FTE CM Health and Wellness
- 1.0 FTE Clerical at Middlebrook
- 1.0 FTE Maintenance
- 1.0 FTE Middlebrook Humanities Coach
- 1.0 FTE Cider Mill SPED Teacher
- 1.0 High School Dean
- 1.0 FTE Miller-Driscoll Paraprofessional
- Additional \$25,000 in increased stipends

Approx: \$660,000

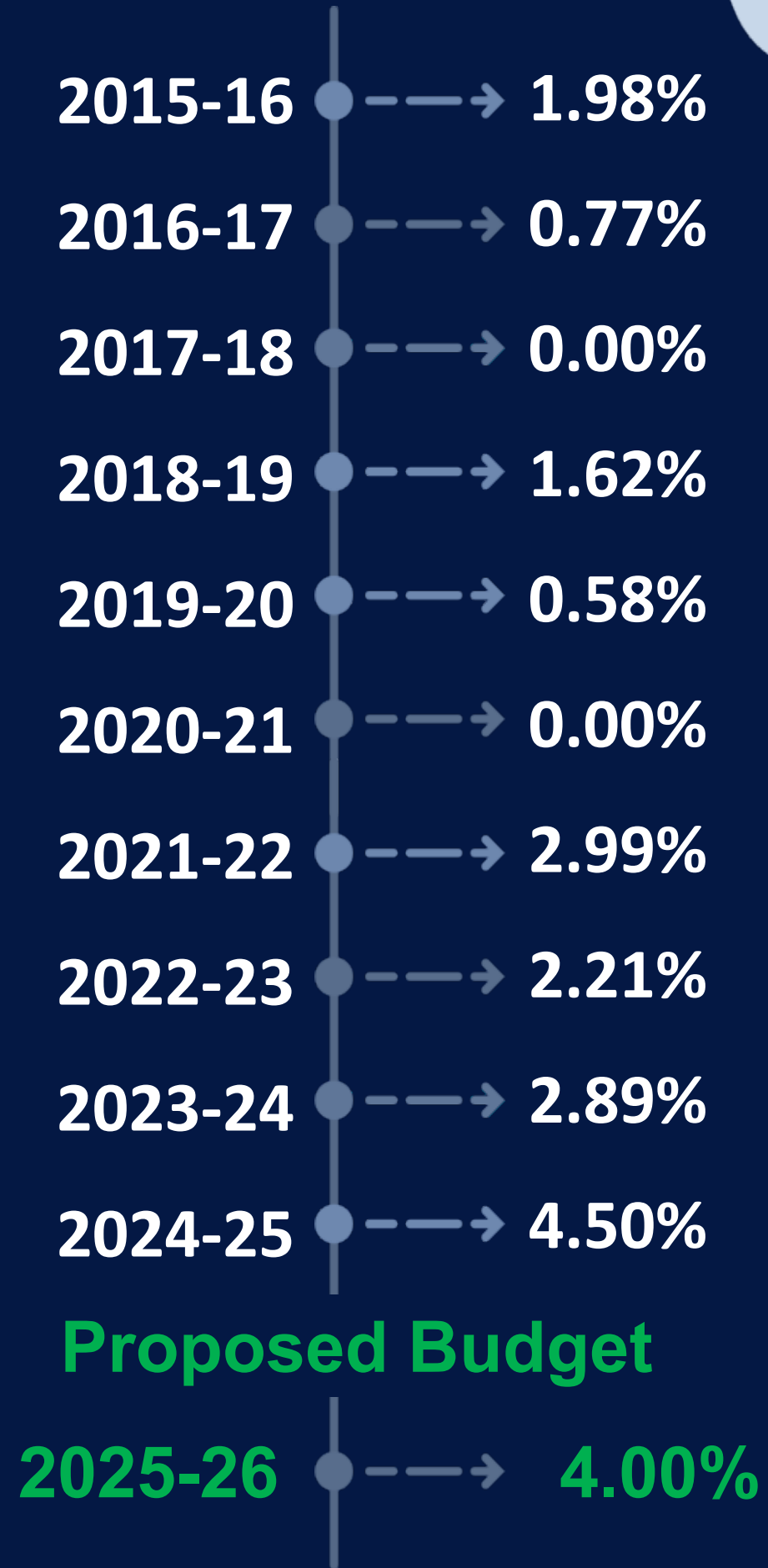


- ✓ Genesis
- ✓ Community Steps
- ✓ Instructional Coaches
- ✓ Collaborative Centers
- ✓ New Course Proposals
- ✓ Vision of a Learner
- ✓ Accelerated Learning Framework
- ✓ Funding STEM Initiatives
- ✓ ELA Program
- ✓ Managing Transportation Costs, Van Purchase
- ✓ Maintaining Class Sizes
- ✓ Revision of Schedules





HISTORICAL BUDGETS

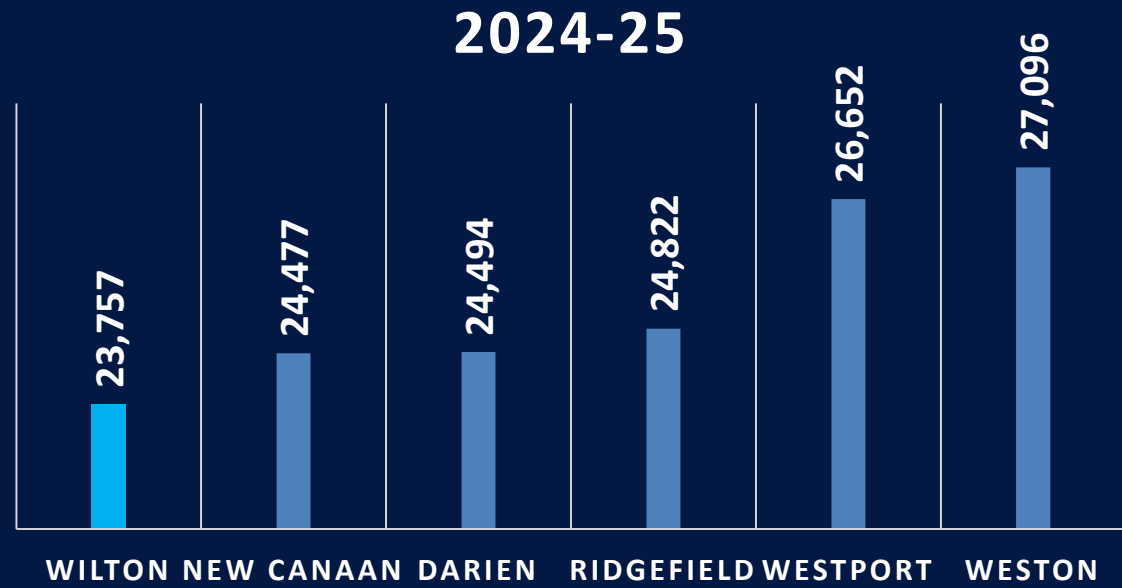


1.75% Increase over 10 years

Budget Comparisons – Compound Annual Growth Rate

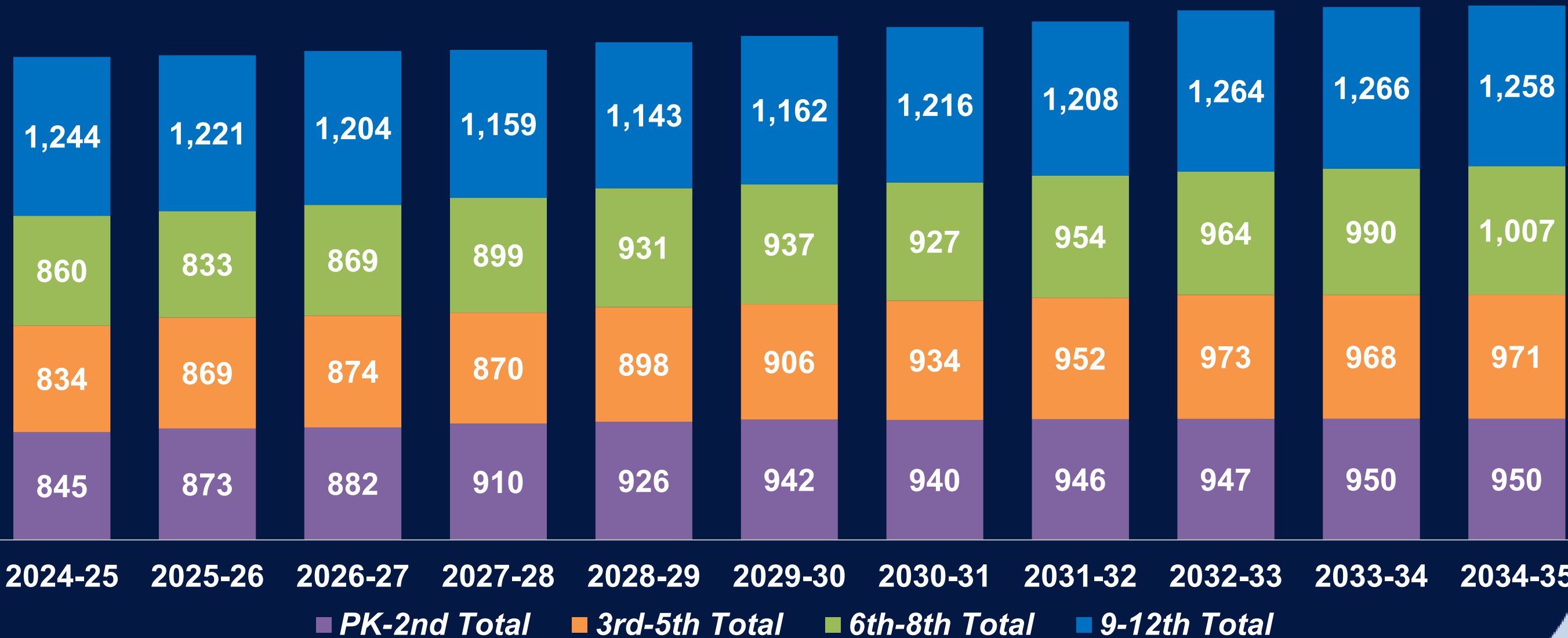
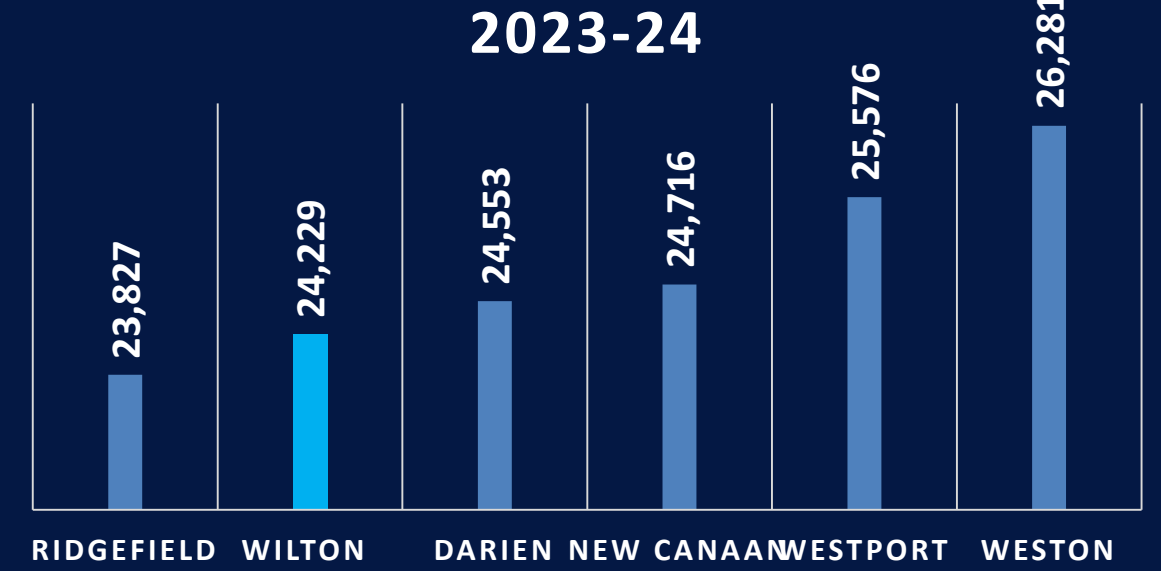
District (DRG A)	2013-2014	2024-2025	11 Yr. Growth	FY25 CAGR	FY26 CAGR
Wilton	\$76,457,070	93,540,759	22%	1.85%	2.00%
Weston	\$45,575,418	\$59,339,701	30%	2.43%	2.48%
Darien	\$87,714,338	\$119,864,475	37%	2.88%	3.05%
Westport	\$104,177,609	\$143,621,615	38%	2.96%	3.11%
Ridgefield	\$82,029,557	\$115,041,000	40%	3.12%	3.21%
New Canaan	\$77,671,886	\$109,395,488	41%	3.16%	3.27%
			Median:		2.76%

Source: BUREAU OF FISCAL SERVICES

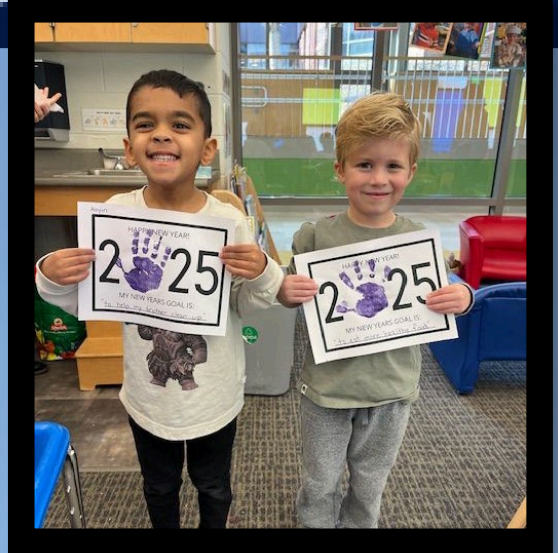


Per Pupil Spending:
According to the NCEP 2024 report, Wilton's per pupil spending is noted as the lowest within District Reference Group A (DRG A) while Wilton maintains a strong academic performance.

Source: EDSIGHT



**WILTON
PREK-12
PROJECTED
ENROLLMENT
BY GRADE
LEVEL
(MEDIUM
MODEL) MP
PLANNING
GROUP
OCTOBER
2024**



Thank You

